

**TOSHIBA**

Leading Innovation >>>

- > Black & White MFP
- > Up to 85 PPM
- > Med/Large Workgroup
- > Copy, Print, Scan, Fax
- > Secure MFP
- > EPEAT Registered\*



**e-STUDIO™ 557/657/757/857**

# Power, performance and drive.

Toshiba introduces an impressive new lineup capable of performing flawlessly, time after time after time. The new e-STUDIO857 series boasts speeds up to 85 pages per minute using the latest generation e-BRIDGE platform to offer world-class functionality, dependability and productivity.

## Go the distance, and then some.

Step up to the e-STUDIO857 series, take a look at the easy-to-navigate, 9" color touch screen, and you'll be impressed right away. Add to that a first copy out time under 3.5 seconds and speeds from 55 to 85 crisp pages per minute at a precise 2,400 x 600 dpi that keeps going for up to 600,000 copies per month, 7,600 sheets at a time. Change toner on the fly, and print on the go. You name it. You're sure to find it here.

## The central hub.

Outstanding image quality at breakneck speeds and extra high volume are perfect for growing companies and large workgroups. It is literally the central hub of all that is document related – the ultimate in storage, management and production with total network connectivity. Need help? Just push a button and you have instant access to context sensitive help straight from the user's manual.



**e-STUDIO™ 557/657/757/857**

# Innovative technology for your entire network.

The new e-STUDIO857 series is versatile, capable, reliable and downright phenomenal. If you've never used a machine of this caliber, you'll be amazed at what a difference it can make in the way you do business.

## Brilliant innovations made easy.

Toshiba's latest e-BRIDGE technology makes it easy to integrate business applications, multiple devices and vendor solutions. Periodic maintenance is made simple, too, thanks to an innovative service module design that allows modules to quickly and easily be removed, serviced and replaced as needed. You can also administer the entire fleet from a single location and govern access to information and functionality wherever necessary. Advanced technology is more accessible than ever.

## An abundance of impressive options.

Choose from several finishers according to your document usage. The e-STUDIO857 series is available with a 50-Sheet Finisher, a 50-Sheet Finisher with Saddle-Stitch or a 100-Sheet Finisher with Saddle-Stitch. Select a 2/3-Hole Punch or Post Inserter and add pre-printed covers or inserts for precise, consistent and professional looking documents. Whether you want to impress employees or win over new clients, the e-STUDIO857 series has what it takes.

- Superb Image Quality
- e-BRIDGE Technology
- Universal Print Driver
- Fast First Copy Out Times
- Up to 7,600 Capacity
- Service Module Design
- Saddle-Stitch Finisher
- 2/3-Hole Punch
- Post Inserter



High quality output, page after page, combined with finishing options help you create professional looking documents with ease.

**TOSHIBA**

Leading Innovation >>>

# Safety, security and environmental responsibility.

The increasing demands of data security and environmental safety are continually being met, and exceeded, here at Toshiba. That's because we have been ahead of the curve with regard to impending concerns and have continually applied innovative technology in order to address them.

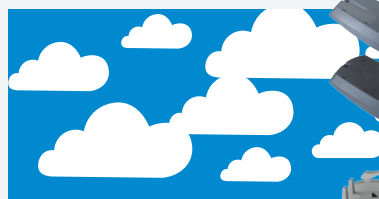


## The security of leading technology.

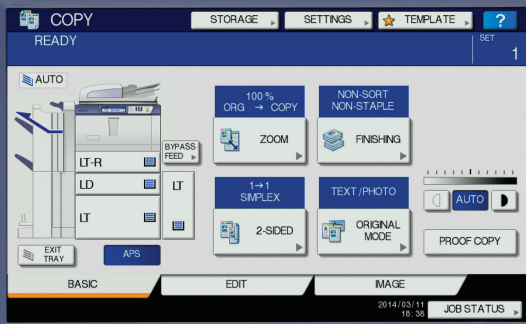
There is no such thing as being too careful when it comes to the security of your data and your business. That's why we've incorporated safeguards such as a new 320GB FIPS 140-2 Validated Self-Encrypting Drive (SED) with Data Overwrite. In addition, there is an IPsec option to encrypt data being sent to or from the MFP, as well as Hard Copy Security that's available to prevent the copying of sensitive documents.

## Safer, smarter and greener.

As a company, we continue to invent ways in which we can reduce the environmental impact of our manufacturing processes and our products themselves. The Toshiba e-STUDIO857 series has a low power sleep mode that meets the stringent requirements of Energy Star Tier 2. It is also RoHS compliant, and even uses recycled plastics. Because of this and other eco-friendly features, the Toshiba e-STUDIO857 series is EPEAT Registered\* in the greener electronics global registry developed to help purchasers choose products that reduce environmental impact. All combined, it's Toshiba's leading innovation at its greenest.



\* e-STUDIO657/757/857 only



# Features and benefits galore.

Here's what Toshiba's e-STUDIO857 series has to offer. You couldn't ask for more.



## Pacesetting printing

Choose your speed, from 55 to 85 pages per minute. First copy out times are under 3.5 seconds for the e-STUDIO757/857 and under 4 seconds for the e-STUDIO557/657.



## Reliable performance

Up to 600,000 monthly copy volume includes a toner yield that keeps pace at 73,900 pages at 6% coverage with the ability to change toner on the fly.



## Broad paper handling

Take advantage of a maximum 7,600-sheet paper capacity and use up to 110 lb index from the drawers and 140 lb pre-printed cover stock from the inserter.



## Most advanced e-BRIDGE platform

This proprietary platform allows for improved connectivity, security and fleet management. Also, you can access third-party solutions such as PaperCut, Docuware and others – right from the front panel.



## Versatile connectivity and functionality

Includes PCL6, PostScript3, and XPS as well as a Universal Printer Driver, which means you only need one driver across the entire line. Driver plug-ins enable increased functionality.



## Easy to use

Scan or print directly using a USB port. A large 9" touch screen panel is easy to read and intuitive. Also, a context sensitive help button will give you added instructions as needed.



## Innovative technology

Use Card Reader Support to control, cap, and accurately account for usage. Other leading innovations include Gigabit Ethernet support, e-filing for frequently reprinted jobs and an automatic OCR option for expert scanning.



## Advanced finishing options

Choose from the 50-Sheet Finisher, a 50-Sheet Finisher with Saddle-Stitch or a 100-Sheet Finisher with Saddle-Stitch, not to mention 2/3-Hole Punch and Post Inserter options.



## Top security

A 320GB FIPS 140-2 Validated Self-Encrypting Drive (SED) with Data Overwrite are standard. Hard Copy Security and IPsec are available as options.



## Environmentally friendly

The e-STUDIO857 series is RoHS Compliant, Energy Star Tier 2 rated and EPEAT Registered\* (as part of the definitive global registry for greener electronics).



- > Black & White MFP
- > Up to 85 PPM
- > Med/Large Workgroup
- > Copy, Print, Scan, Fax
- > Secure MFP
- > EPEAT Registered\*

**Specifications**

Copying Process/Type	IEPM (Dry Process)/Laser Technology
Original Reading Method	CCD Line Sensor
Copy/Print Resolution	2400 x 600 dpi
Gradation	256 Steps
Copy/Print Speed	55/65/75/85 PPM
Warm-Up Time	Approx. 130 Seconds
First Copy Time	556/656: Less Than 4.0 Seconds (Letter-Size) 756/856: Less Than 3.5 Seconds (Letter-Size)
Duty Cycle	460K/515K/540K/600K
Multiple Copying	Up to 9,999 Copies
Standard Paper Supply	2 x 500-Sheet Drawer, 1 x 2,500-Sheet Tandem Drawer, 100-Sheet Stack Feed Bypass
Maximum Paper Supply	Up to 7,600 Sheets (w/Optional 4,000-Sheet LCF)
Acceptable Paper Size	Cassette: Statement-R to Ledger (17-110 lb) Bypass: Statement-R to 11" x 17" (17-110 lb) LCF: Letter Only (17-110 lb), Tab Paper
Memory	2GB RAM, 320 GB FIPS 140-2 SED
Reduction/Enlargement	25% to 400%
Bypass Tray	100-Sheet Stack Feed Bypass
Control Panel	9" Wide VGA Color Touch Screen
Dimensions	Approx. 28" x 31" x 46" (W x D x H)
Weight	Approx. 462 lb
Power Supply	120 Volts, 20 Amps
Power Consumption	Maximum 2.0kW
Black Toner Yield	73.9K Impressions

**e-BRIDGE Print Specifications**

PDL Support	PCL6, PostScript 3, XPS
Operating Systems	Windows Server 2003, 2008, 2012, Vista SP2, 7, 8, NetWare 6.5, Citrix, Macintosh 10.4-10.9, Solaris v10, 11, HP-UX V11.iv3, AIX 7.x, Linux, SCO
Protocol Support	Windows Printing (SMB1.0/2.0), LPR/LPD, IPP (Ver.1.1) w/Authentication, NetWare P-SERVER w/NDS, Binary, Novell NDPS Gateway, or LPD w/ iPrint, Apple Talk PAP or EtherTalk, Port 9100 (bi-directional), WS Print, FTP
Drivers	Windows Server 2003, 2008, 2012, Vista SP2, 7, 8, Macintosh OS 10.4-10.9
Connectivity	10/100/1000BaseTX Ethernet, 802.11b/g/n, Wireless LAN, USB
Wireless Device	AirPrint, e-BRIDGE Print & Capture Application on iOS and Android (Available via Apple App Store or Google Play)
Device Management	Top Access, eFMS 6.0 (e-BRIDGE Fleet Management Software)
Certification	Windows 7, 8, 8.1, 2008R2, 2012, 2012 R2, WHQL, Novell, Citrix

**Scan Specifications**

Scan Speed	77 SPM Color/80 SPM B&W, LT-Size @300 dpi, 66 SPM LT-Size @ 600 dpi (When Copying)
Scan Resolution	Up to 600 dpi
File Format	TIFF, PDF, JPEG, XPS, MS Word, MS Excel, Searchable PDF w/Adv. Scanning Option

**Facsimile Specifications**

Compatibility	Super G3, G3
Data Compression	MH/MR/MMR/JBIG
Transmission Speed	Approx. 3 Seconds Per Page
Fax Modem Speed	33.6 Kbps
Fax Memory	Transmission 500MB (HDD) Reception 500MB (HDD) Backup Permanent (HDD)
Memory Transmission	100 Jobs, 1,000 Destinations Max, 400 Destinations/Job
Scan Speed	0.7 Seconds Per Page, 50 Scans Per Minute
Other Fax Functions	Internet Fax, Network Fax

**e-Filing Specifications**

Operation Method	Color Touch Screen Control Panel or Client PC
Number of Boxes	1 Public Box, 200 Private User Boxes
Capacity of Boxes	100 Folder Per Box 400 Documents Per Folder 1000 Pages Per Documents

**Security (Standard)**

Data Encryption	256 Bit AES
HDD Overwrite	Meets Department of Defense (DoD) Standard 5220.22M
Authentication	LDAP, SMTP, Windows Server Domain

**Accessories (Options)**

<b>Additional Paper Options</b>	
4,000-Sheet LT-Size Large Capacity Feeder	MP4004
<b>Finishing Options</b>	
50-Sheet Stapler Console Finisher	MJ1027
50-Sheet Saddle-Stitch Finisher	MJ1028
100-Sheet Saddle-Stitch Finisher	MJ1029
Rails for Finisher	KN1017
2/3-Hole Punch Unit	MJ6003
Post Inserter Unit	MJ7001
<b>Connectivity/Security Options</b>	
Fax Kit	GD1350
2nd Line Fax	GD1260F
Wireless LAN Adapter	GN1060
Antenna	GN3010
Advanced Scanning	GB1280T
IPsec Kit	GP1080
Meta Scan Enabler	GS1010
Harness Kit for Coin Controller	GQ1240



<b>Corporate Office</b>	9740 Irvine Blvd., Irvine, CA 92618-1631 Tel: 949-462-6000
East Coast	959 Route 46 East, 5th Floor, Parsippany, NJ 07054 Tel: 973-316-2700
Midwest	8770 W. Bryn Mawr Ave., Suite 700, Chicago, IL 60631 Tel: 773-380-6000
South	2037 Bakers Mill Rd., Dacula, GA 30019 Tel: 678-546-9385
West Coast	9740 Irvine Blvd., Irvine, CA 92618 Tel: 949-462-6000
Web Site	www.business.toshiba.com

Designs and specifications subject to change without notice. For best results and reliable performance, always use supplies manufactured or designated by Toshiba. Not all options and accessories may be available at the time of product launch. Please contact a local Authorized Toshiba Dealership for availability. Toner yields are estimates based on 6% coverage, letter-size page. Driver and connectivity feature support varies by client/network operating system.

\* e-STUDIO657/757/857 only